

## FITTING INSTRUCTIONS

### Apply grease during clutch fitment

Application for  
All clutches

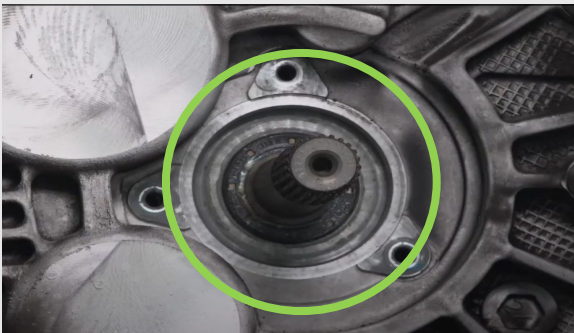
Part numbers  
135000



### SPECIAL NOTES BEFORE APPLYING GREASE

- Ensure the correct **TYPE** of grease is being used
- Ensure the correct **AMOUNT** of grease is being used
- Ensure the correct **COMPONENTS** are lubricated with grease

### INSTRUCTIONS OF APPLYING GREASE



**Step 1**

Make sure before applying grease that the input shaft and all other surfaces around it are clean and no dirt or residual oil on it.

**Step 2**

Apply the grease on the shaft and by using a small clean brush and by following the mentioned rules in terms of quantity and type.

**Step 3**

Apply the grease on the housing pivots & brushes by using a small clean brush by following the mentioned rules in terms of quantity and type

If you don't follow the rules in terms of **type** & **quantity** of grease, the following issues will appear;

- Judder,
- Vibrations,
- Shafting malfunctions

