

Montageanleitung
Innenraumleuchte Thinlite

Mounting Instructions
Interior thinlite

Instructions de montage
Lampe d'intérieur thinlite

Monteringsanvisning
Interiörlampa thinlite

Montagehandleiding
Thinlite interieurlamp

Instrucciones de montaje
Lámpara interior thinlite

Istruzioni di montaggio
Lampada per interno thinlite

Asennusohje
Thinlite sisävalo

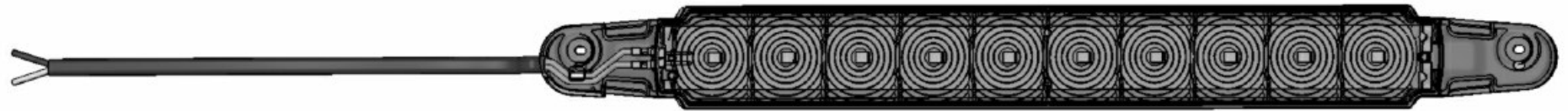


Lieferumfang
Kit includes
Furniture

Leveransomfattning
Inhoud set
Volumen del suministro

Dotazione di fornitura
Osaluettelo

A , B 343606-00, 343606-01, 343606-20, 343606-21

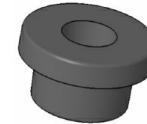


2

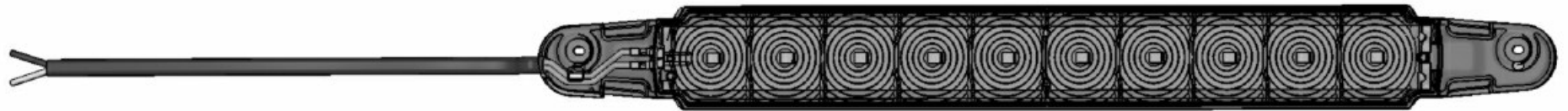
2x



2x



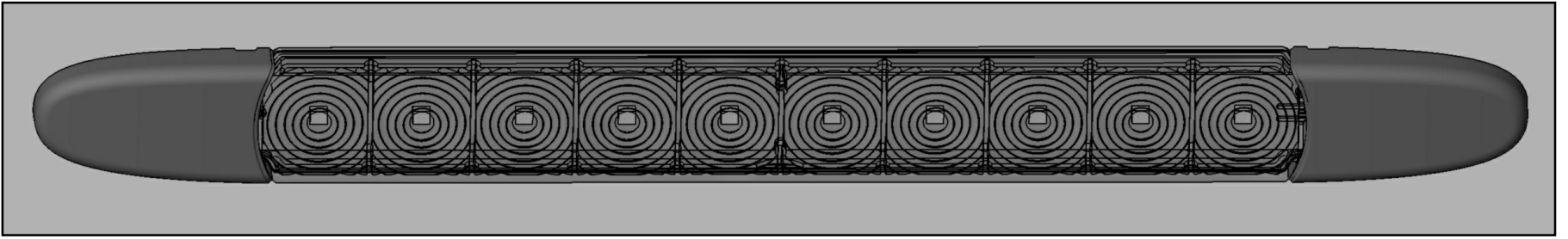
C 343606-02, 343606-03, 343606-22, 343606-23



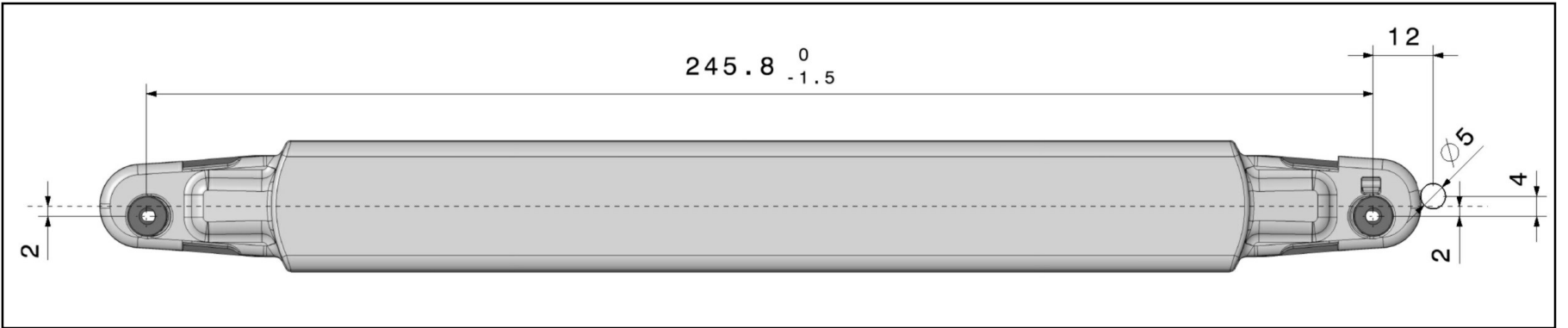
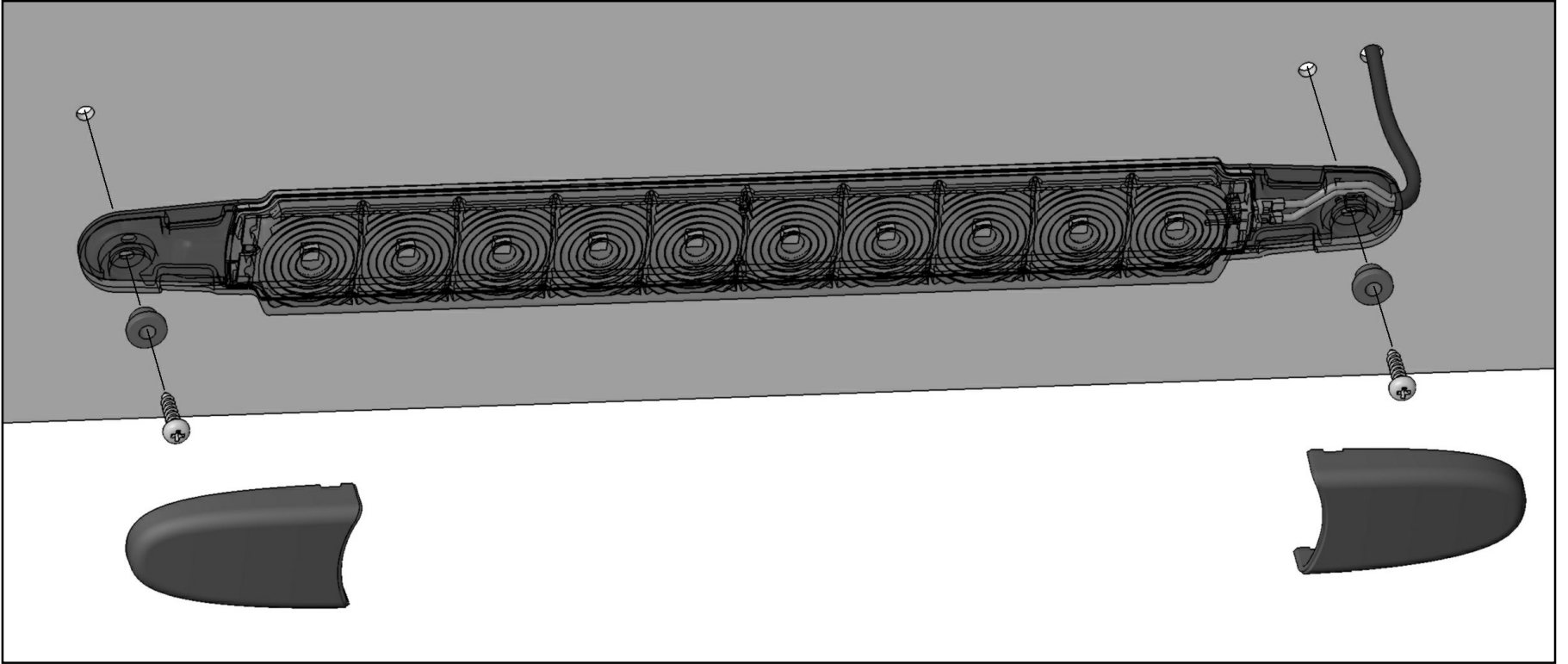
2x



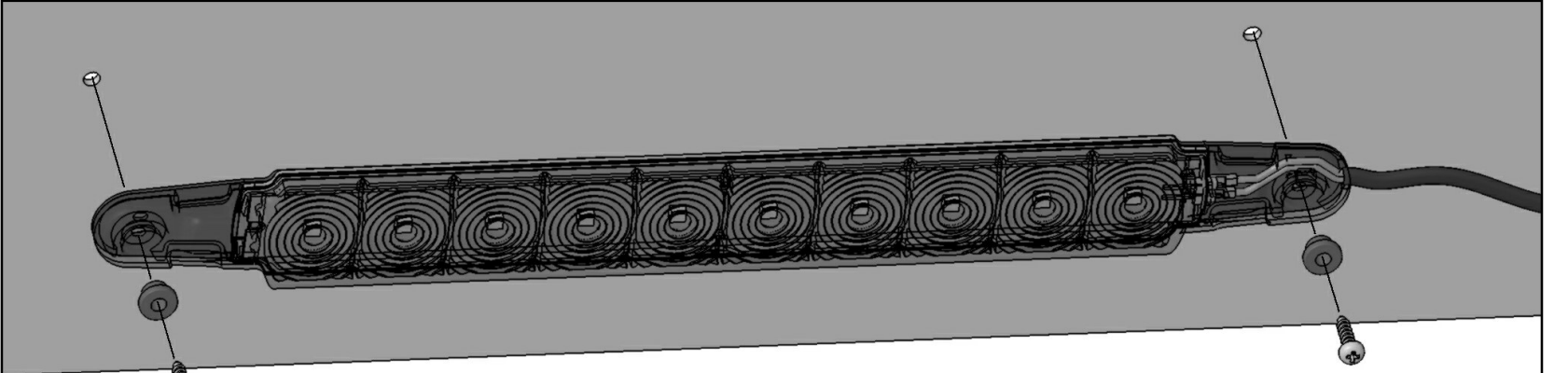
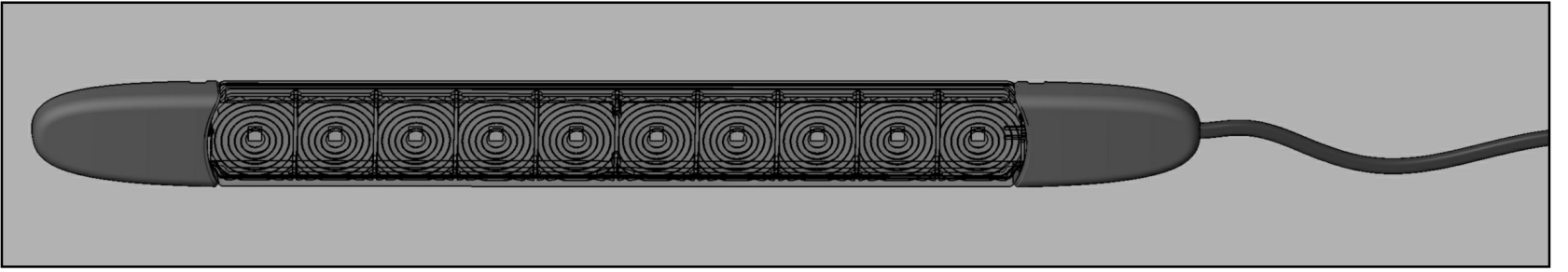
A



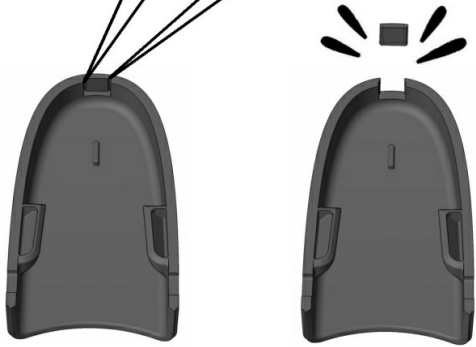
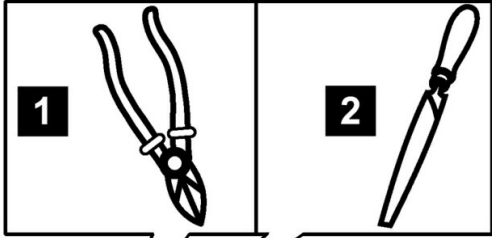
3

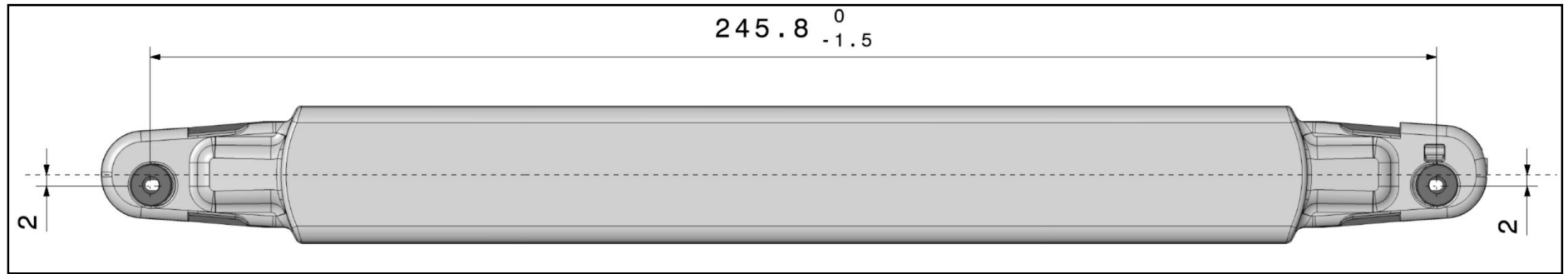


B

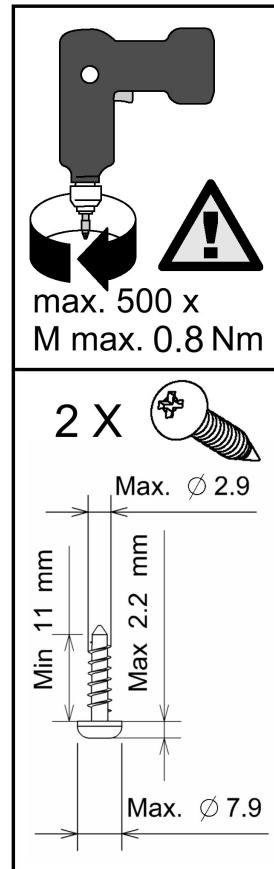
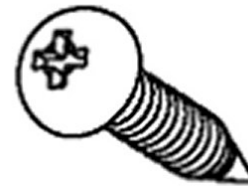


4

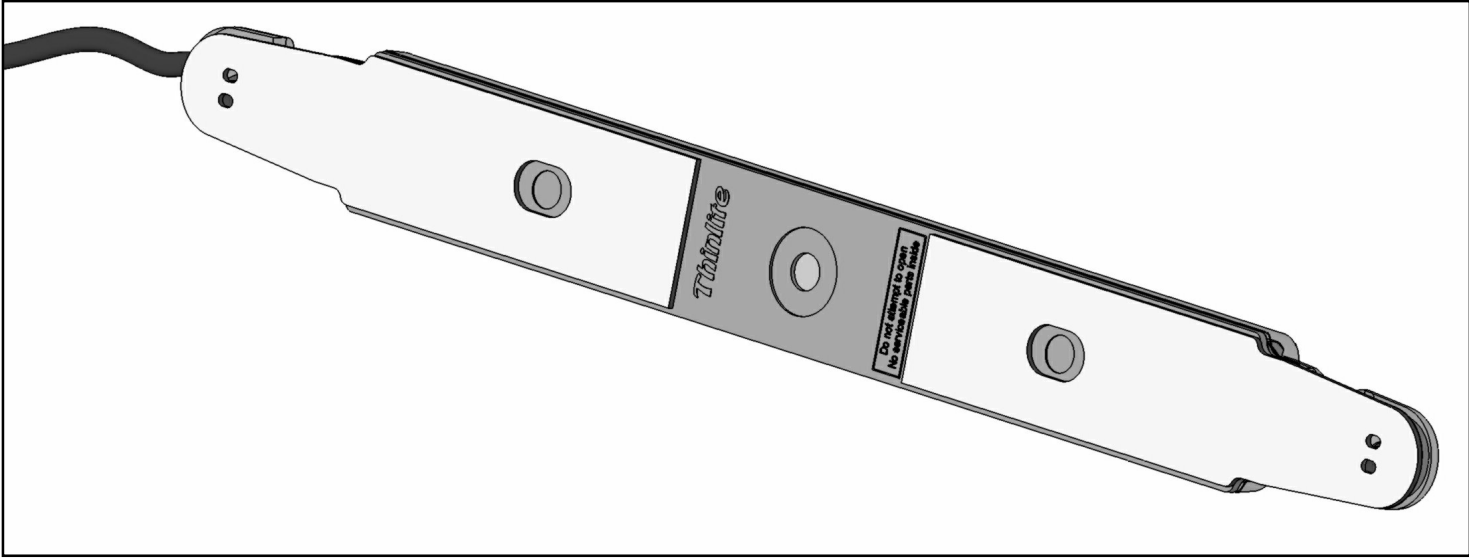




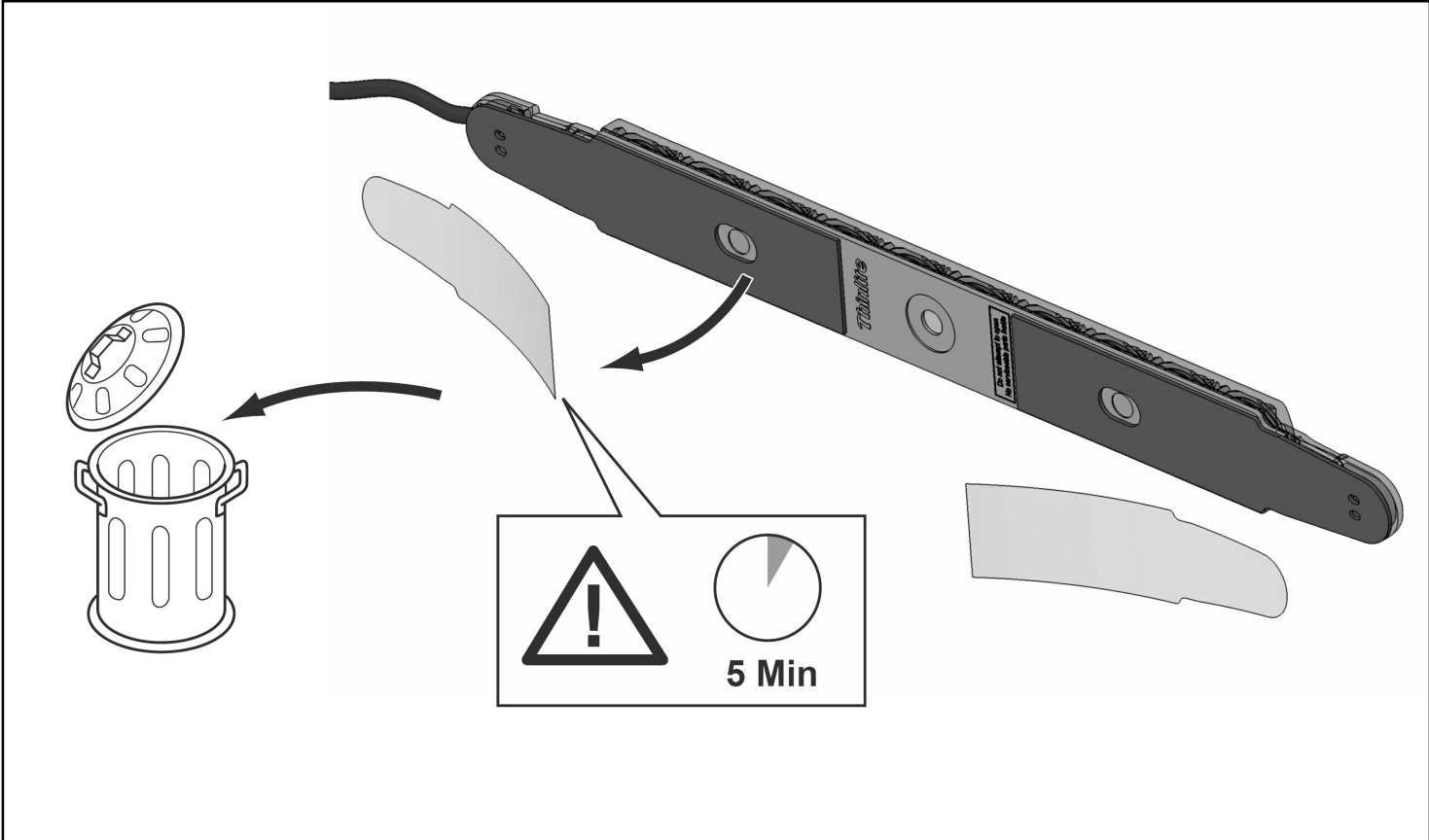
Nicht im Lieferumfang enthalten
Not included with kit
Non fornita
Ingår ej i leveransen
Worden niet meegeleverd
No se incluyen en el suministro
Non in dotazione
Eivät kuulu toimitukseen



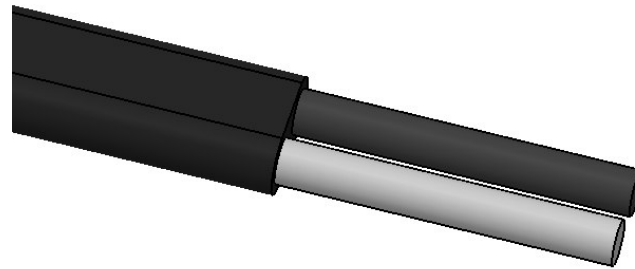
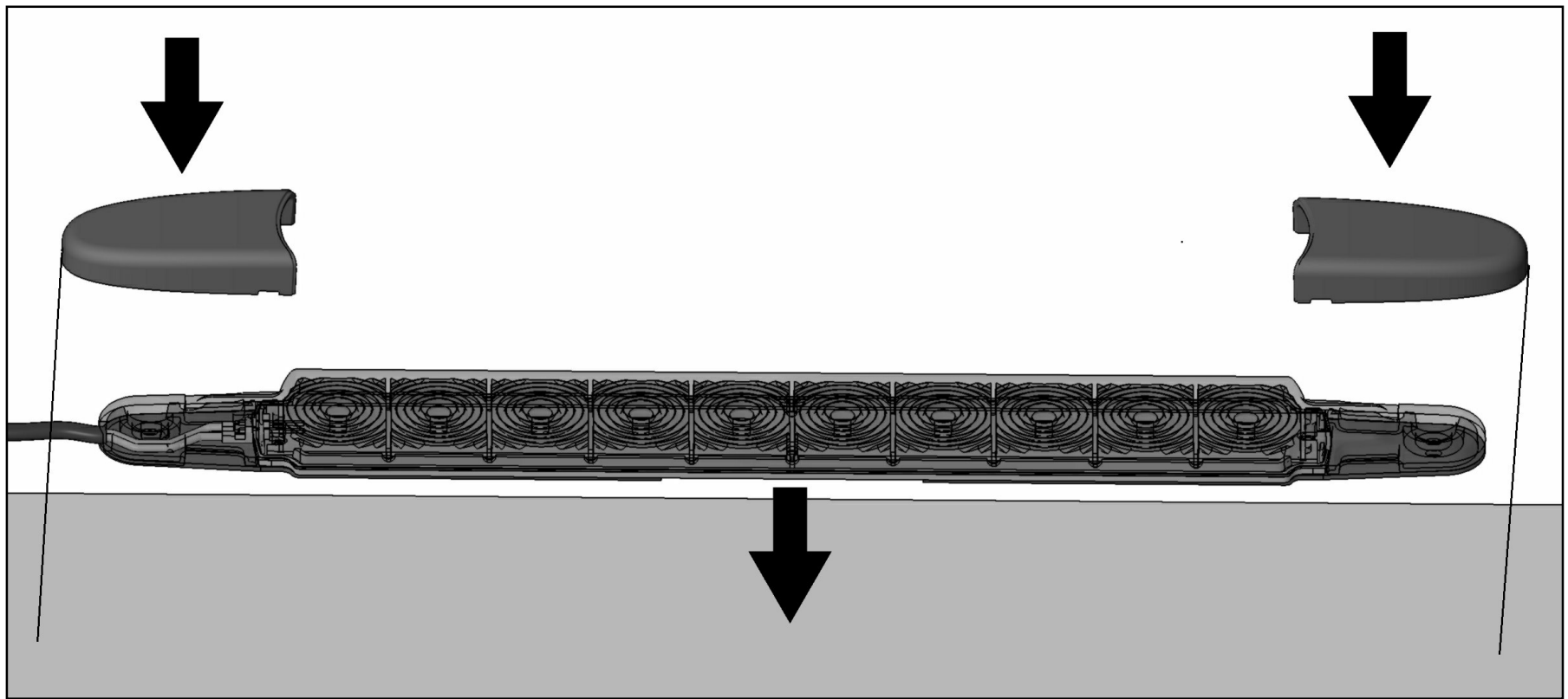
C



6



7



Thinlite + = Rot, red, rouge, röd, rood, rojo, rosso, punainen

Ground - = Gelb, yellow, jaune, gul, geel, amarillo, giallo, keltainen

D
Nicht öffnen, enthält keine wartungsfähigen Teile.

GB
Do not attempt to open, no serviceable parts inside.

FR
Ne pas tenter d'ouvrir, aucune pièce de service à l'intérieur.

SV
Ta inte isär lampan, delarna inuti går inte att reparera.

NL
Niet openen! Bevat geen te onderhouden onderdelen.

ES
No es necesario abrir, no contiene piezas para mantenimiento.

IT
Non tentare di aprire, all'interno non vi sono parti riparabili.

FIN
Älä yritä avata, sisällä ei ole huollettavia osia.